

# FABRAL®

METAL WALL AND ROOF SYSTEMS



## FABRAL CASE STUDY

# RACING TO RENOVATION WITH METAL

RACE PACE BICYCLES  
ELLCOTT CITY, MARYLAND

### Product Details

12" and 16" [Silhouette HCF Series™](#)

### Distributor

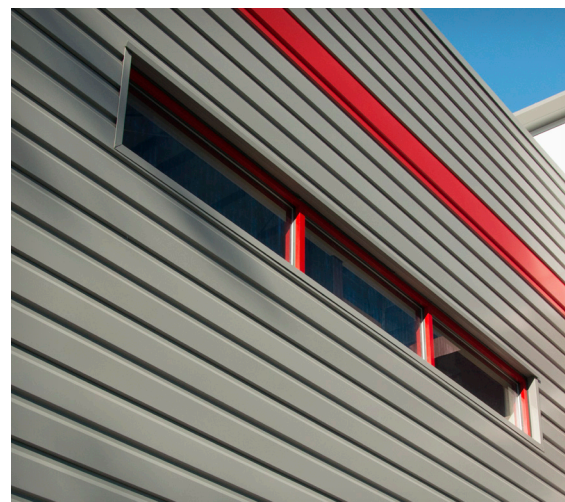
N.B. Handy, Inc.  
Lynchburg, VA

### Architect

Ammon Heisler Sachs Architects  
Baltimore, MD

### Contractor

Bakers Construction  
Westminster, MD







## GEARING UP BRAND APPEAL FROM THE OUTSIDE IN

The renovated Race Pace Bicycle Ellicott City, MD location is the latest expansion for this local bike retailer founded in 1978. What was once a prefabricated metal warehouse and office building is now an eye-catching retail and service outlet that conveys strong brand values. As part of a local corridor revitalization, the building was transformed from a poorly insulated warehouse to a highly efficient facility that surpasses the 2012 International Energy Code requirements.

During construction, the building was stripped of its metal siding to install a continuous board insulation layer outside the girts. The existing corrugated metal roof was removed and replaced with a new, highly reflective Fabral standing-seam metal roof system that reduces the heat island effect.

This small project has had a large impact to the intersection and property value. What was once an eyesore is now a thriving location for active cyclists.

**A building's exterior can speak volumes about a company. Click here to learn how to express your brand with metal.**

Source: [Maryland AIA Chapters - Excellence in Design Awards 2016](#)

## ABOUT FABRAL

Lancaster, PA-based Fabral is the premier supplier of metal roofing and wall panels for architectural, educational, commercial, industrial and agricultural applications. Founded in 1967, Fabral has been widely recognized as the benchmark leader for over 45 years. As a leader in the metal roofing and wall panel systems, Fabral's quality product offering, advanced engineering support and dedicated customer service have elevated Fabral to become the provider of choice. Fabral is a division of Euramax International, Inc.

To learn more, visit [www.Fabral.com](http://www.Fabral.com).

## ABOUT EURAMAX

Euramax International, Inc is a global producer of architectural copper, cladding, patio, roof and lawn drainage, snow retention, windows and transportation products for original equipment manufacturers, distributors, contractors and home centers worldwide. Formed in 1996, it leverages "the power of one" with its extensive product offering, advanced systems and dedicated team of experts. Through its network of twelve brands, Euramax collectively offers more than 1,000 quality products to serve the diverse needs of its customers. Euramax brands include Alumawood, Amerimax, Amerimax Fabricated Products, Amerimax Windows & Doors, Equinox Louvered Roof, Berger Building Products, CopperCraft, Euramax Coated Products, Euramax Industries, Ellbee, Fabral, and Global Expanded Metals.

For more information, visit [www.euramax.com](http://www.euramax.com).